



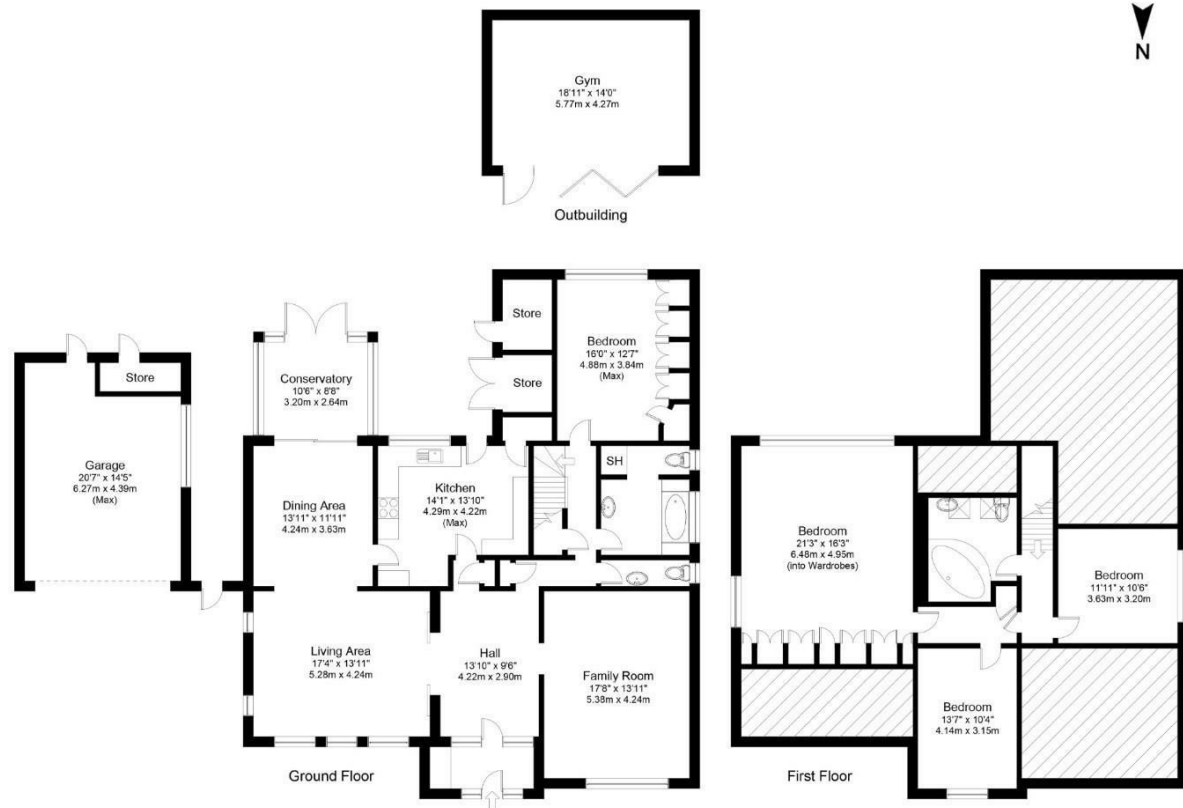
190 ALWOODLEY LANE
LEEDS, LS17 7PF

£1,100,000
FREEHOLD

Monroe are delighted to offer to the market this stone built, four bedroom, detached home set in magnificent, south facing gardens and highly sought after area Alwoodley.

M O N R O E

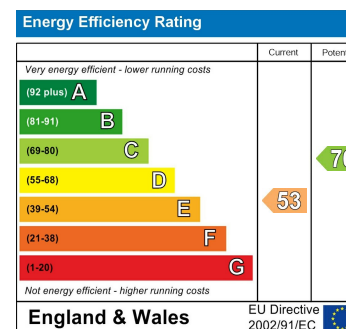
SELLERS OF THE FINEST HOMES



Gross internal floor area including stores, excluding eaves, garage & outbuilding (approx.): 230.9 sq m (2,485 sq ft)

Garage & Outbuilding (approx.): 52.1 sq m (561 sq ft)

For illustrative purposes only. Not to Scale. Copyright © Zenith Creations.



Agents Note: Whilst every care has been taken to prepare these particulars, they are for guidance purposes only. All measurements are approximate and are for general guidance purposes only and whilst every care has been taken to ensure their accuracy, they should not be relied upon and potential buyers/tenants are advised to recheck the measurements

Alwoodley Sales
716 King Lane Alwoodley
Leeds
West Yorkshire
LS17 7BA

0113 870 4443
hello@monroeestateagents.com
www.monroeestateagents.com

MONROE

SELLERS OF THE FINEST HOMES